
Getting Started Guide

Part Number 34810-90002
May 1996

© Copyright Hewlett-Packard Company 1996
All Rights Reserved.

HP 34810B BenchLink Scope

Welcome

Welcome to HP BenchLink Scope. This Getting Started Guide will give you a quick overview of HP BenchLink Scope's capabilities. Throughout this guide, On-Line Help System references will speed you on your way to finding more in-depth information about HP BenchLink Scope capabilities.



Just look for these Help icons in this guide, then explore the listed topics in the On-Line Help System to learn more.

HP BenchLink Scope provides a communications link between your personal computer (PC) and many HP oscilloscopes and logic analyzers. With this software, you can quickly and easily transfer the following types of information from your instrument to your PC:

- **Screen Images** - You can transfer bitmap pictures of the instrument screen to your PC for viewing, printing, and storage in TIF or PCX formats. You can annotate your images and copy and paste these images into other applications for documenting and presenting your work.
- **Waveform Data** - Your instrument's time and amplitude data can be transferred to a PC and displayed graphically. You can review your data and save it in a variety of formats or you can easily copy and paste the data into other applications for further analysis.
- **Instrument Setups** - You can easily transfer setups to your PC and later send them back to the instrument to conveniently restore a previous setup.



How To... (by feature) Work with Screen Images How To... (by feature) Work with Time/Amplitude (Waveform) Data How To... (by feature) Work with Front Panel Settings
--

Installing HP BenchLink Scope

First, configure your interface:

HP BenchLink Scope can use an HP-IB or RS-232 interface to connect to your instrument. You need to configure your interface *before* running HP BenchLink Scope in order to ensure that proper communications are easily and quickly established. Take a look at your instrument and interface manuals for hardware and software setup procedures and cabling information.

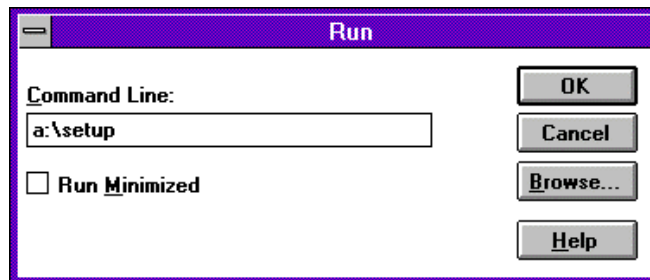
HP-IB and RS-232 Interface Connections

Please be sure to check out the On-Line Help System for guidance on configuring interfaces and choosing the right RS-232 cables.

Now, install the software:

If you're running Windows® Version 3.x:

- ✓ **1** Select **File | Run** from the Program Manager menu bar.
- ✓ **2** Next, insert Disk #1 into your disk drive and type **a:\setup** or **b:\setup**, depending on which drive the HP BenchLink Scope disk is in, then click **OK**.

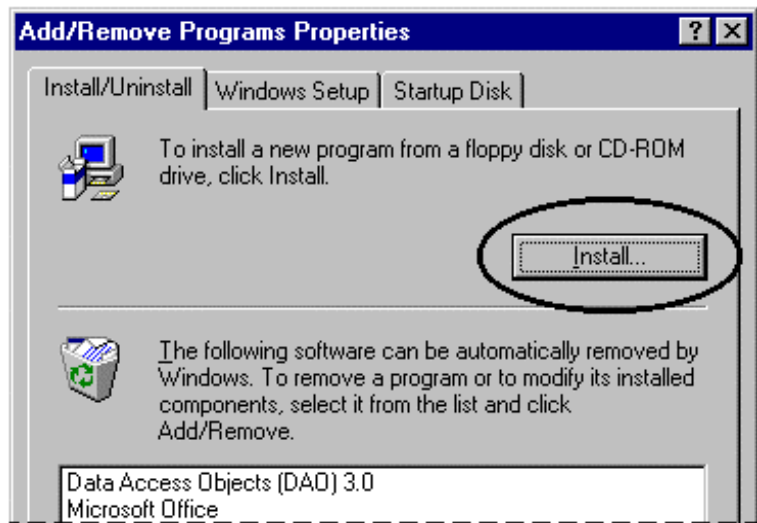


- ✓ **3** Then, follow the on-screen instructions provided by the Setup program.

An HP BenchLink Scope program icon will be installed within the HP BenchLink Scope program group.

If you're running Windows® 95:

- ✓ **1** Select **Settings | Control Panel** from the **Start** menu. Double-click the **Add/Remove Programs** icon to invoke the **Add/Remove Programs** properties sheet.
- ✓ **2** Next, select the **Install/Uninstall** tab on the **Add/Remove Programs** properties sheet. Click the **Install** button and follow the on-screen installation instructions.



An HP BenchLink Scope shortcut icon will be automatically installed on your desktop.



ReadMe file
Configure PC-to-Instrument Interfaces
Troubleshooting

Starting HP BenchLink Scope

If you're running Windows® Version 3.x:



Double-click the HP BenchLink Scope icon in the HP BenchLink Scope program group.

If you're running Windows® 95:



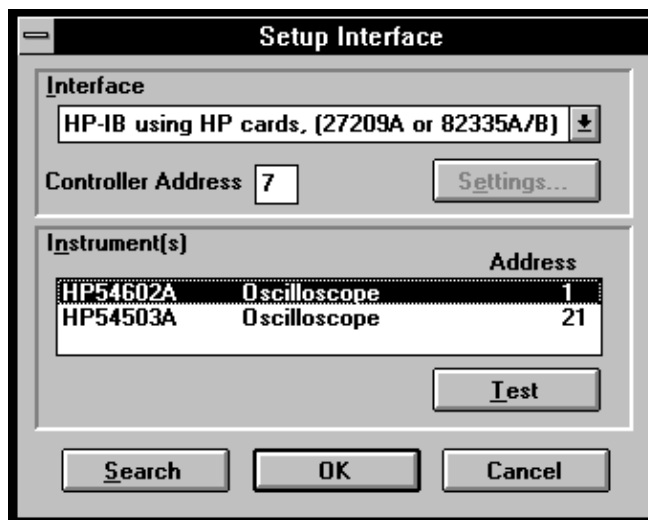
Double-click the HP BenchLink Scope shortcut icon on your desktop.

Connecting to the Instrument

When you start HP BenchLink Scope for the first time:

- ✓ **1** HP BenchLink Scope searches for an HP-IB interface installed in your PC and any instruments connected to that interface. HP BenchLink Scope will try to connect to the instrument at HP-IB address 7.
- ✓ **2** If no HP-IB interface or HP-IB connected instruments are found, HP BenchLink Scope then checks the default serial port for any instruments. By default, HP BenchLink Scope will examine the COM2 serial port using 9600 baud with XON/XOFF handshaking.
- ✓ **3** If neither of these steps results in an instrument being found, the **Setup Interface** dialog box will be displayed.

Make any necessary changes to the settings. Then, click the **Search** button, highlight the instrument to be connected and click **OK** to complete the connection to the instrument.

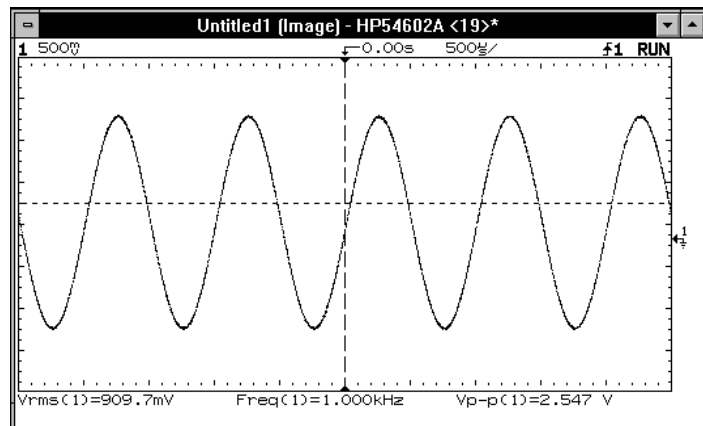


Software and Hardware Installation
Troubleshooting

Capturing Screen Images

You can easily copy your instrument's display to your PC. This display can then be saved to a file or copied to other applications via the Windows® Clipboard.

- ✓ **1** Select **Image | New...** from the HP BenchLink Scope menu bar.
- ✓ **2** Click the **OK** button to capture the image.



How To... (by feature) | Work with Screen Images

Image Features

Once you've captured the screen image and transferred it to your PC, you can use any of the following image features.

In many cases, icons have been assigned to the features that you'll use most often. If you prefer to use menu bar commands, you'll find them in the pull-down menu under **Image** in the menu bar.

Choose Menu Command or

Click This Icon...

To See This Result...



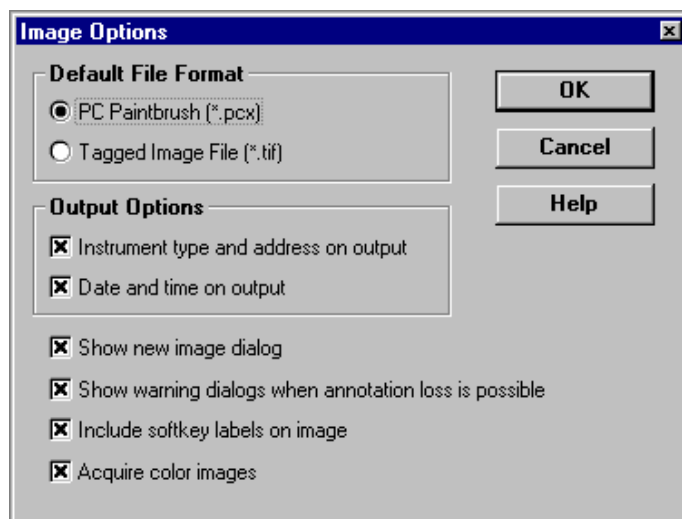
Updates the active image view with a new image from the instrument screen.



Saves the image to a file.

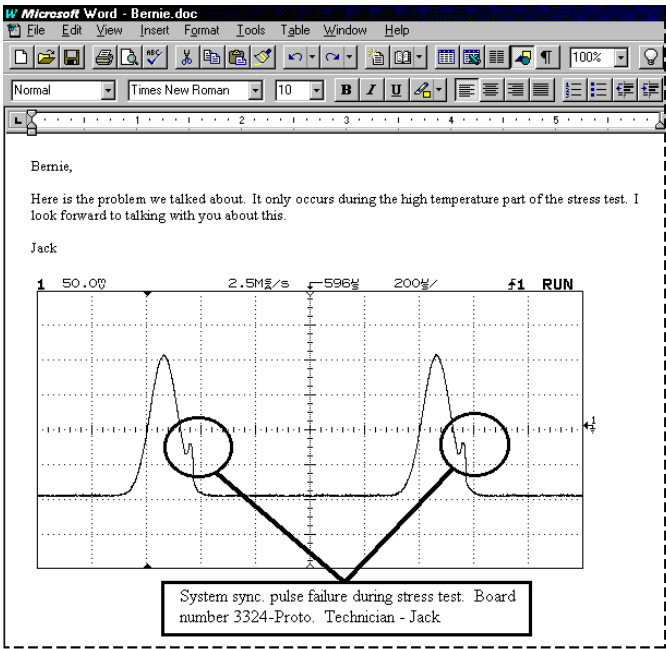
**Image |
Options...**

Selects Image Options.



Copies the active image view to the Windows[®] Clipboard in bitmap form.

Then, to paste this image into another application, simply open the target application and use its paste feature – it's that easy!



Adds line drawings to images.



Adds text to images.



Adds freehand drawing to images.



Prints the image from the active view.



Opens images saved in .PCX or .TIF formats.

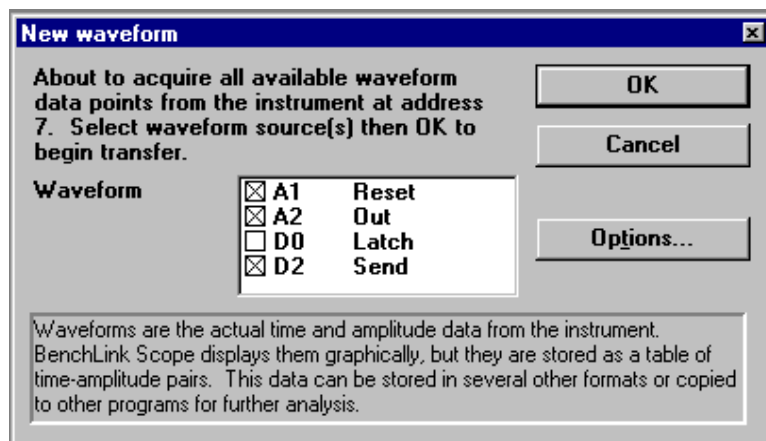


How To... (by feature) | Work with Screen Images

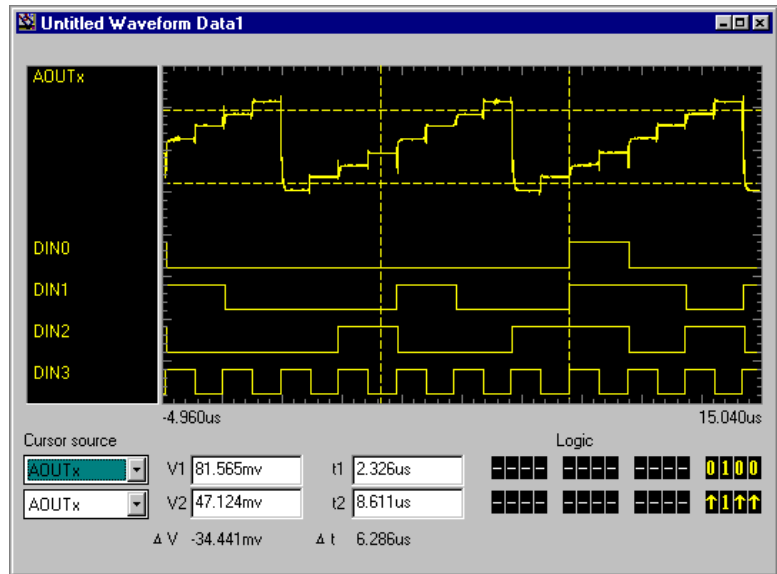
Capturing Waveform Data

HP BenchLink Scope can transfer waveform data from the instrument to your PC. The waveform data consists of time and amplitude information and can be saved to ASCII files or copied into other applications via the Windows® Clipboard. To transfer waveforms:

- ▼ **1** Select **Waveform | New...** . You can select the waveform(s) to be transferred.



- **2** The new waveform view on the following page displays the waveforms you selected.



Features Available from the Waveform View

Click on...

To See This Result...



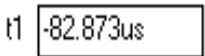
Pans through the acquired waveform data.



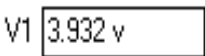
Horizontally expands the plotted waveforms.



Horizontally contracts the plotted waveforms.



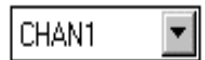
Lets you see and edit the X position of a marker.



Lets you see and edit the Y position of a marker.



Returns markers to a visible part of the display.



Associates markers with a particular channel.



How To... (by feature) | Work with Time/Amplitude (Waveform) Data

Waveform Features

Once the waveform data has been captured and transferred to your PC, the following waveform features are available:

Choose Menu

Command or

Click This Icon...

To See This Result...

**File | Save
as...**

Saves the waveform data as a binary (.WFX) file.

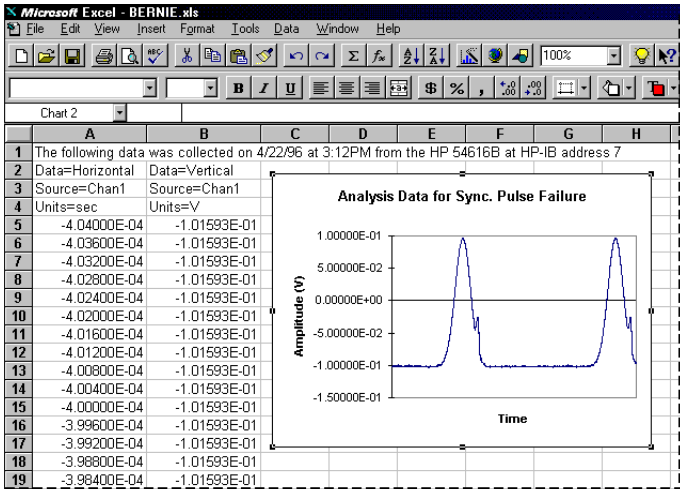
**Waveform |
Save as time,
amplitude...**

Saves the waveform data as a comma-separated (.CSV) or tab-separated (.PRN) time/amplitude ASCII file.



Copies waveform data to the Windows[®] Clipboard in ASCII form.

Then, to paste this waveform data into another application, simply open the target application and use its paste feature – it's that easy!



Updates the active waveform view with new waveform data from the instrument.

Waveform | Options...

Adjusts acquired waveform size, grid options, and various print and saved file options.



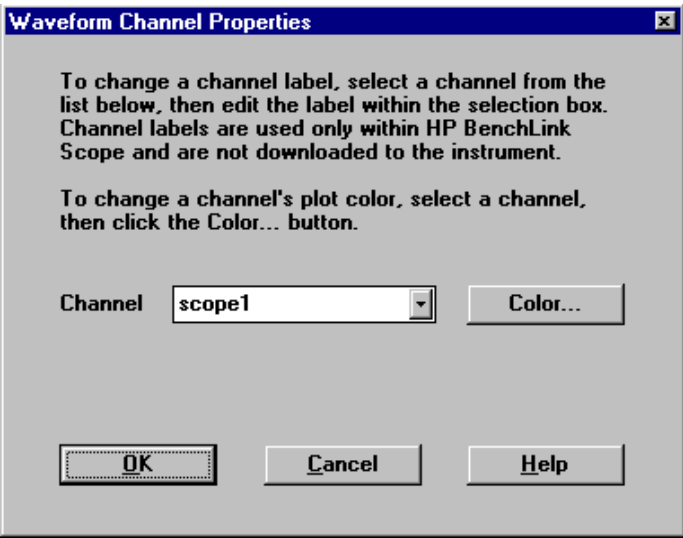
Prints the waveform data from the active view.



Opens files containing stored waveform data.

**Waveform |
Channel
Properties...**

Changes the channel labels and alters the channel plot color.



How To... (by feature) | Work with Time/Amplitude (Waveform) Data

Instrument Setups

All instrument front panel settings, including timebase settings, vertical settings, and trigger settings, can be copied from the instrument to the PC. The setup can be saved in an .STP file and later sent back to the instrument to restore instrument front panel conditions.

Setup Features

Choose Menu Command...	To See This Result...
Setup Instrument setup...	Invokes the Instrument Setup dialog box which allows instrument setups to be saved to the PC or restored to the instrument.



How To... (by feature) | Work with Front Panel Settings

Need Additional Help?

- 1** Check out the detailed information found in the On-Line Help System. We've worked hard to be sure that common problems are addressed in the Troubleshooting section of the Help System.
- 2** A quick browse through the ReadMe.txt file located in HP BenchLink Scope's installation directory will give you late-breaking information and tips.
- 3** If you are still having problems finding the answers to your software or hardware questions, feel free to contact HP Technical Support. Contact information is located in the Troubleshooting section of the On-Line Help System.



Troubleshooting

WARRANTY

A copy of the specific warranty terms applicable to your Hewlett-Packard product and replacement parts can be obtained from your local Sales and Service Office.

EXCLUSIVE REMEDIES

THE REMEDIES PROVIDED HEREIN ARE BUYER'S SOLE AND EXCLUSIVE REMEDIES. HP SHALL NOT BE LIABLE FOR ANY DIRECT, INDIRECT, SPECIAL, INCIDENTAL, OR CONSEQUENTIAL DAMAGES, WHETHER BASED ON CONTRACT, TORT, OR ANY OTHER LEGAL THEORY.

NOTICE

The information contained in this document is subject to change without notice. HEWLETT-PACKARD (HP) MAKES NO WARRANTY OF ANY KIND WITH REGARD TO THIS MATERIAL, INCLUDING, BUT NOT LIMITED TO, THE IMPLIED WARRANTIES OF MERCHANTABILITY AND FITNESS FOR A PARTICULAR PURPOSE. HP shall not be liable for errors contained herein or for incidental or consequential damages in connection with the furnishing, performance, or use of this material. This document contains proprietary information which is protected by copyright. All rights are reserved. No part of this document may be photocopied, reproduced, or translated to another language without the prior written consent of Hewlett-Packard Company. HP assumes no responsibility for the use or reliability of its software on equipment that is not furnished by HP.

U.S. Government Restricted Rights

The Software and Documentation have been developed entirely at private expense. They are delivered and licensed as "commercial computer software" as defined in DFARS 252.227-7013 (Oct 1988), DFARS 252.211-7015 (May 1991), or DFARS 252.227-7014 (Jun 1995), as a "commercial item" as defined in FAR 2.101(a), or as "restricted computer software" as defined in FAR 52.227-19 (Jun 1987) (or any equivalent agency regulation or contract clause), whichever is applicable. You have only those rights provided for such Software and Documentation by the applicable FAR or DFARS clause or the HP standard software agreement for the product involved.

Use of this manual and magnetic media supplied for this product are restricted. Additional copies of the software can be made for security and backup purposes only.

© Copyright 1996. Hewlett-Packard Company. All Rights Reserved.

Printing History

The Printing History shown below lists all Editions and Updates of this manual and the printing dates. The first printing of the manual is Edition 1. The Edition number increments by 1 whenever the manual is revised. Updates, which are issued between Editions, contain replacement pages to correct the current Edition of the manual. Updates are numbered sequentially starting with Update 1. When a new Edition is created, it contains all the Update information for the previous Edition. Each new Edition or Update also includes a revised copy of this printing history page. Many product updates or revisions do not require manual changes and, conversely, manual corrections may be done without accompanying product changes. Therefore, do not expect a one-to-one correspondence between product updates and manual updates.

Edition 1 (Part Number 34810-90002) May 1996

Trademark Information

HP, BenchLink® and LaserJet® are registered trademarks of Hewlett-Packard Company.

CompuServe® is a registered trademark of CompuServe, Inc.

DADiSP™ is a trademark of DSP Development Corporation.

IBM® is a registered trademark of International Business Machines Corporation.

Lotus® and 1-2-3® are registered trademarks of Lotus Development Corporation.

Microsoft®, MS®, MS-DOS®, Word®, and Excel® are registered trademarks of Microsoft Corporation.

Windows™ is a trademark of Microsoft Corporation.

Paint Shop® copyright of JASC, Inc.

Paintbrush™ is a trademark of Zsoft Corporation.

InstallShield is a registered trademark of InstallShield Corporation.